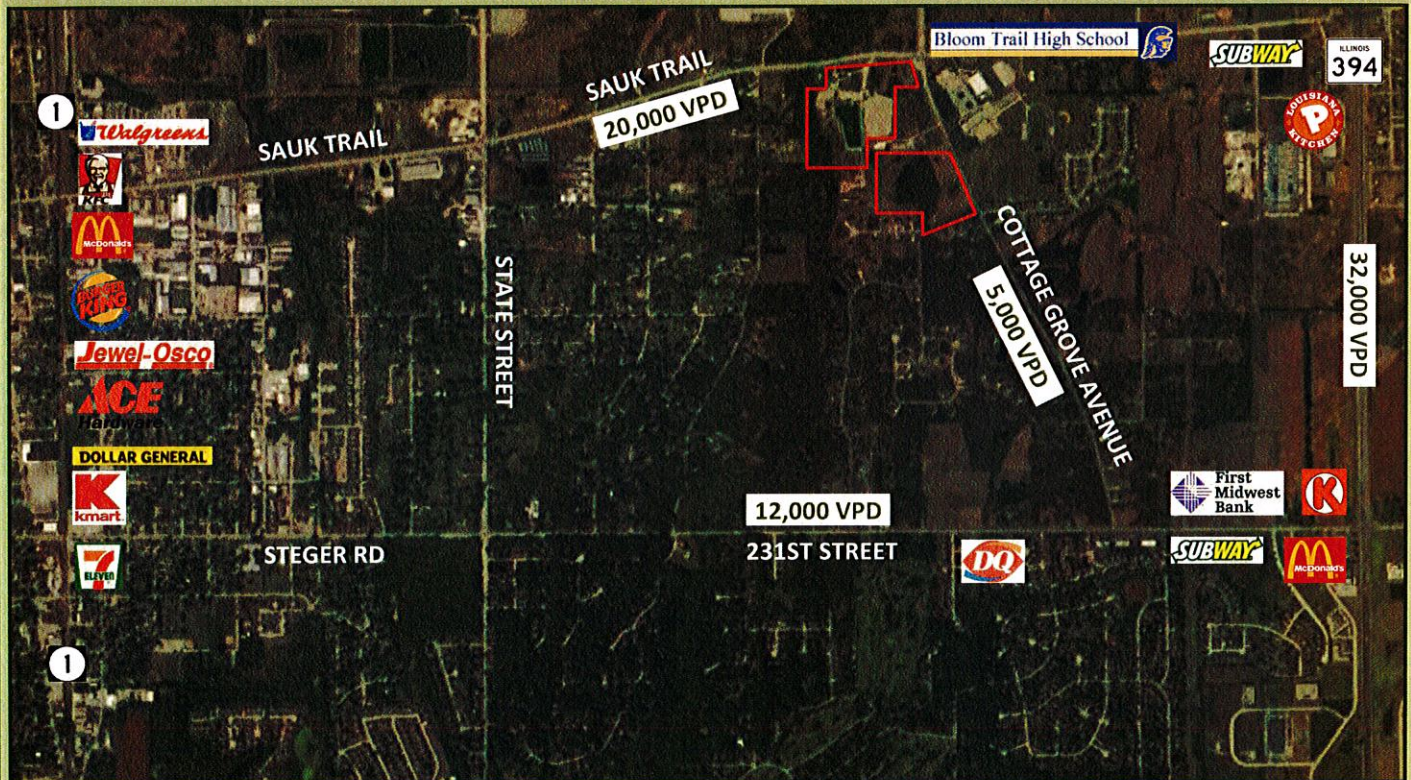


Steger, Illinois

Development Opportunities

The Village of Steger Economic Development Committee, in partnership with the South Suburban Land Bank & Development Authority, is continually working on identifying properties for rehabilitation.



- 48 +/- acres of commercial property available for development
- Incentives - Village owned property, TIF potential
- Directly across from Bloom Trail High school; 1500 Student enrollment per year
- 70,000 VPD - Daily vehicle traffic within immediate area
- 42,000 - Area daytime employment and visitors
- Lake Michigan water available at property lines
- 800 Employees at local Ford factory

MARKET AREA DEMOGRAPHICS

	1 Mile	3 Miles	5 Miles
Population	11,090	57,475	122,819
HH Income (Average)	\$49,742	\$52,242	\$61,595
Employment (Daytime)	8,003	42,244	92,729